



# MONTHLY MEMBERSHIP PROGRESS REPORT

District 5 NW

Results as of: 4/30/2016

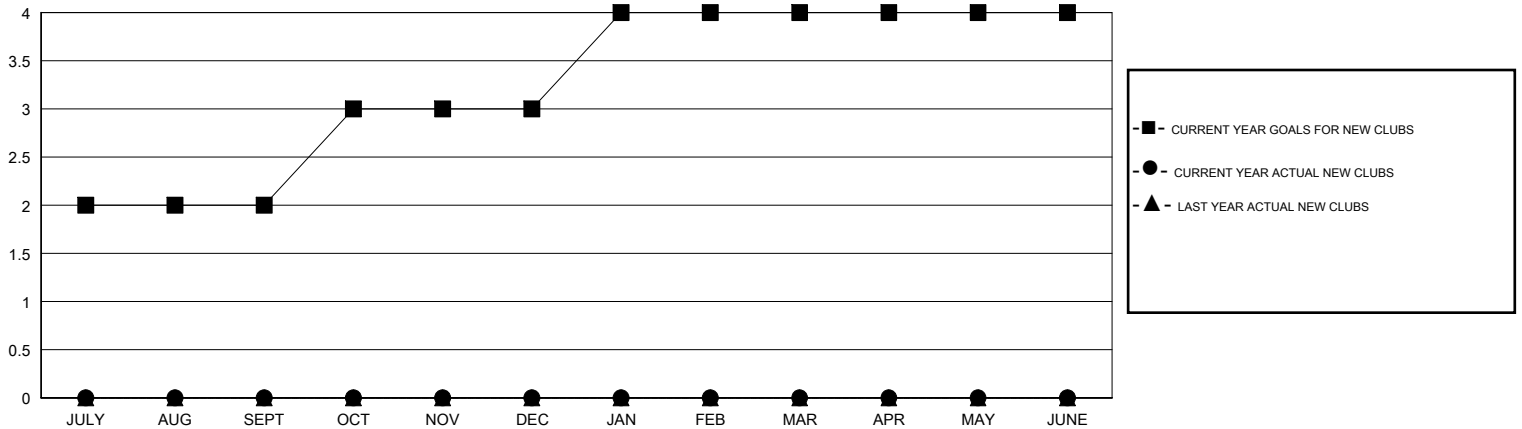
GMT: Judy Hankom

LOCATION NORTH DAKOTA

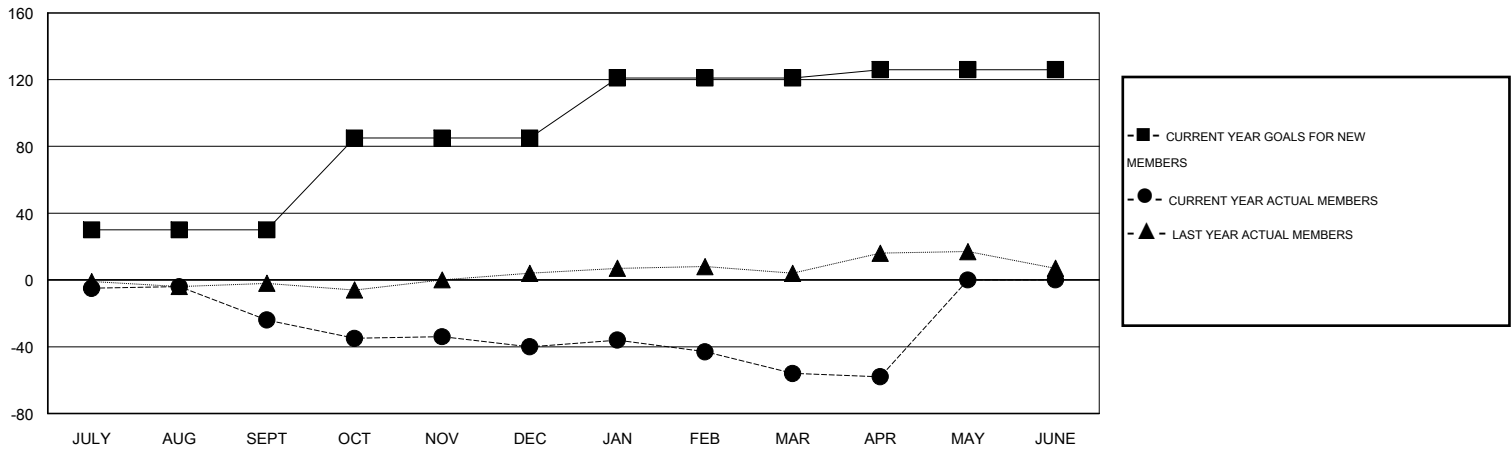
GMT CA 1

Clubs					Members				
RESULTS FOR 2015-2016					RESULTS FOR 2015-2016				
QUARTER	NEW CLUB GOAL	NEW CLUBS	DROPPED CLUBS	NET GAIN/LOSS	QUARTER	NEW MEMBER GOAL	CHARTER AND NEW MEMBERS ADDED	DROPPED MEMBERS	NET GAIN/LOSS
JULY/AUG/SEPT	2	0	1	-1	JULY/AUG/SEPT	30	27	51	-24
OCT/NOV/DEC	1	0	0	0	OCT/NOV/DEC	55	16	32	-16
JAN/FEB/MAR	1	0	0	0	JAN/FEB/MAR	36	27	43	-16
APR/MAY/JUNE	0	0	0	0	APR/MAY/JUNE	5	6	8	-2

GOALS AND ACTUAL NEW CLUBS CUMULATIVE



GOALS AND ACTUAL MEMBERS CUMULATIVE



DROPPED CLUBS: 1	28 CLUBS OF 47 ADDED 1 OR MORE NEW MEMBERS	<b>GENDER DISTRIBUTION</b>
		MALE 832 (67.81%)
		FEMALE 395 (32.19%)
<b>DROPPED MEMBERS</b>	<a href="#">CLICK HERE FOR HEALTH ASSESSMENT DATA</a>	<b>FAMILY UNIT MEMBERS</b> 231
DECEASED 13		HEAD OF HOUSEHOLD 113
CLUB CANCELLED 18		NON-HEAD OF HOUSEHOLD 118
OTHER 103		
<b>TOTAL 134</b>		